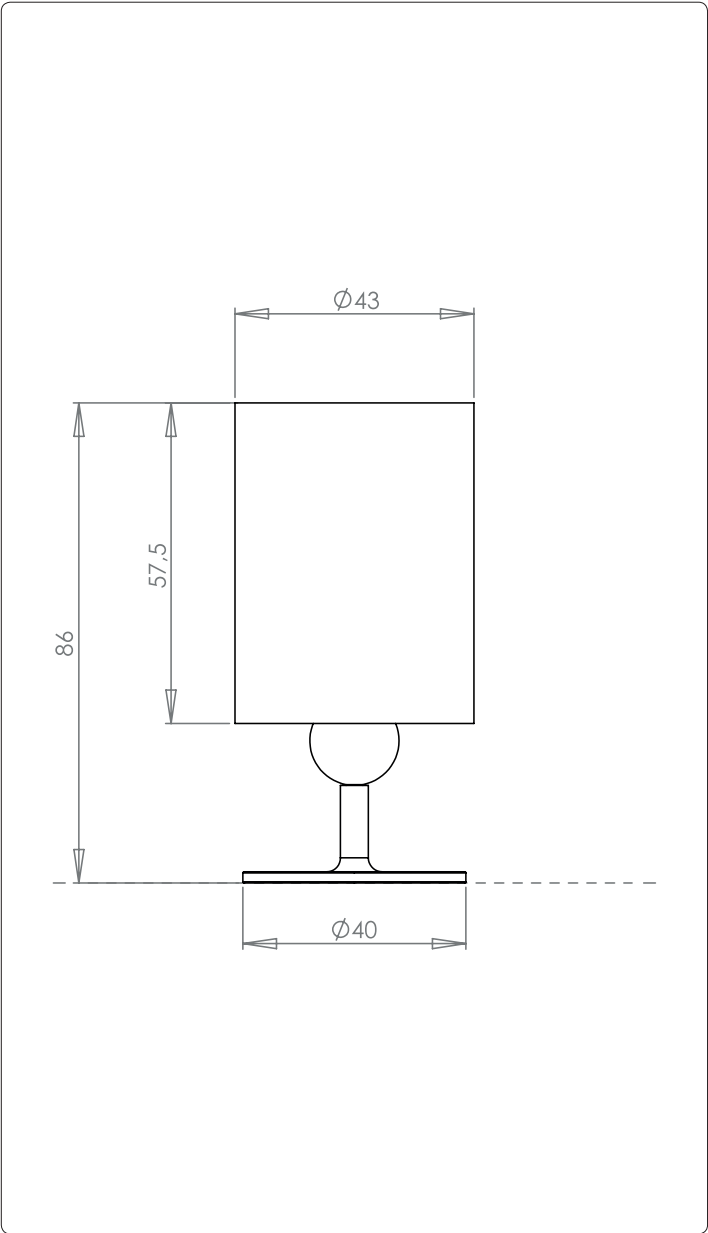




↓ PRODUCT DESCRIPTION

The L5 spot is the long version of the C5. This discreetly elegant light is surprisingly powerful for its small size. It provides high-quality interior lighting and unparalleled efficiency and reliability. Part of the «C» range, with its 360-degree magnetic ball joint, the Spot L5 is suited to a variety of general and precision lighting uses.



↓ OUTPUT

8W

↓ POWER SUPPLY

0,7A

↓ IP RATING

IP 40

↓ STANDARDS COMPLIANCE

EN 62471

EN 60598-1

EN 60598-2

CE

III

↓ CRI

IRC90

↓ DIMMING

1-10V

DMX

↓ DEGREES

10°

20°

30°

50°

↓ COLOUR TEMPERATURE

2700K

3000K

3500K

4000K

↓ COLOURS

BK

WH

AL

CH

GO

RAL COLOURS

- ↓ SOURCES

 - Luminous flux according to Bining: 800 lumens;
 - Colour temperature: 2 700 K to 4 000 K (2 at 3 Macadam step);
 - Service Range: 70 % of nominal flux after 50 000 hours;
 - Colour Rendering Index: CRI 80 or CRI 90.
- ↓ OPTICAL CHARACTERISTICS

 - PMMA acrylic lens, efficiency ~90 %;
 - Available degrees: 10°, 20°, 30° et 50°.
- ↓ ELECTRICAL CHARACTERISTICS

 - Constant current supply: 700 mA;
 - Supply connection: Polarised output connectors;
 - Power consumption to 8 W max, excluding supply;
 - Electrical Classification: Class III SELV device.
- ↓ MECHANICAL CHARACTERISTICS

 - Articulating base, patented magnetic ball joint;
 - Mounting on hook;
 - Operating temperature: -5° +40°;
 - ROHS components;
 - Interior use only.
- ↓ SPECIFICITIES

 - Electrolytic treatment available;
 - 3 years guarantee.

↓ CLASSIFICATION

Product Ref.		SL005				
Specification			A			
Colour	Black			BK		
	White			WH		
	Aluminium			AL		
	Chromium			CU		
	Gold			CU		
	RAL			CU		
Colour temperature	2700K				27	
	3000K				30	
	3500K				35	
	4000K				40	
Degrees	10°					10
	20°					20
	30°					30
	50°					50
REFERENCE		SL005 -	A -	BK -	30 -	20